



Omega - Plus

Integrated solar panels



LiFePO4
Battery



Intelligent
Control



Biodiversity
Protection



IP65
Waterproof



Designed
Aesthetically



Remote
Control



Hybrid function
(Solar & Grid)

Omega - Plus Integrated solar panels

Building on the Omega legacy, the Omega-Plus Series combines elite durability and modern aesthetics for high-end solar applications. Its aerospace-grade aluminum alloy housing, IP68-rated and corrosion-resistant, protects a high-capacity LiFePO4 battery paired with the high-efficiency MPPT controller, ensuring reliable performance in extreme conditions.

The system supports seamless integration with interchangeable LED luminaires (15W-120W), offering flexibility for luxury residential, commercial, and smart-city projects. Featuring tool-free installation and customizable finishes, it balances sleek design with rugged functionality. The light head can be any model as required.

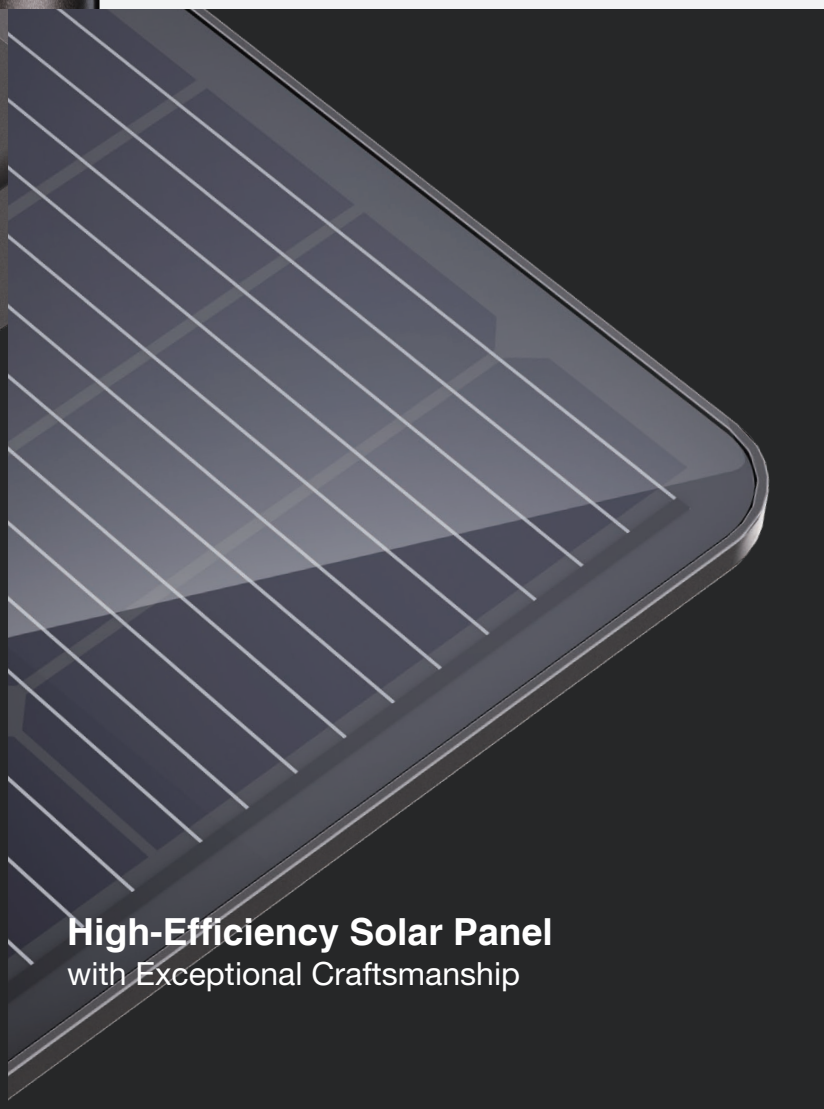




Die-Cast Aluminum Housing



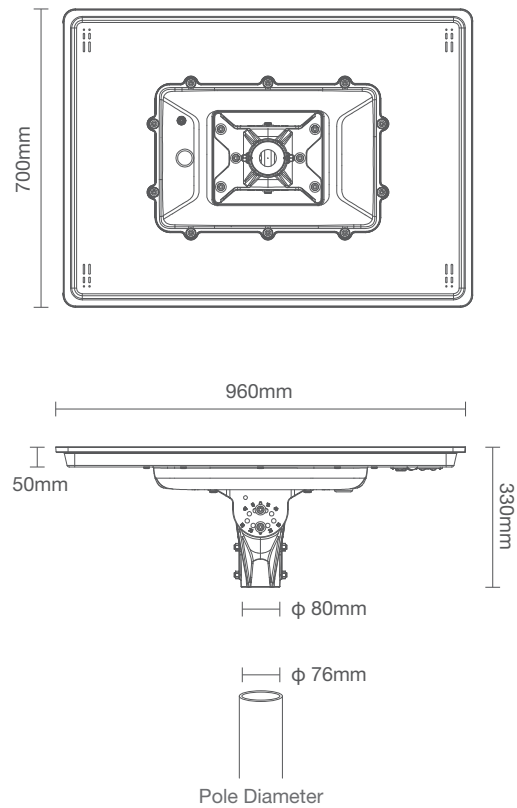
304 Stainless Steel
Adjustable Bracket



High-Efficiency Solar Panel
with Exceptional Craftsmanship

Omega - Plus

Integrated solar panels



MAIN PARAMETERS

Model name	Omega - Plus
LiFePO4 Battery	12.8V 45AH/60AH
Battery Lifetime	4000 cycles @ D.O.D 60%
Solar Panel	128W 18V Mono
Solar Controller	MPPT
Motion Sensor	PIR / Microwave Optional
Dimension	960*700*330mm
Pole Diameter	76mm
Operating Temp.	-10°C ~ +60°C
Operating humidity	10% ~ 90%
Fixture materials	Aluminium Die Casting
Fixture color	Black
Installation Height	4~12m
IP Rating	IP65
Net Weight	29.30Kg
Warranty	5 years

Define Your Design

The system supports seamless integration with interchangeable LED luminaires (15W-120W), offering flexibility for luxury residential, commercial, and smart-city projects. Featuring tool-free installation and customizable finishes, it balances sleek design with rugged functionality. The light head can be any model as required.



More options

