

The Navigator Solar Area Light is a great fit for commercial, recreational bikeway/pathway and public space lighting applications. The self-contained, unobtrusive design integrates its solar power, adaptive Bluetooth control and LED technologies into a compact and efficient form. With robust construction and unequalled performance, the Navigator Solar Area Light is an excellent fit wherever cost-effective, high powered solar powered lighting is required.

FEATURES

IP66 Ingress protection

IK10 Vandal resistance

C4H Anti-corrosion - Adapt to high salinity or humid environment.

New technology to enhance user experience

Bluetooth Mesh & APP Control - Create an advanced intelligent and low-carbon lighting environment.

Adjustable to 5000lm

Dual colour temperature design - 3000K and 5700K can be switched by button or AP.

Variable time /PIR settings to create custom lighting scenes.

ALS technology - to prolong the lighting time >7 rainy days.

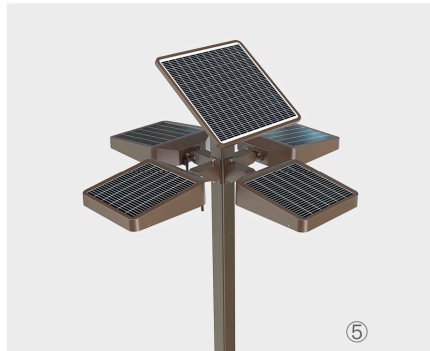
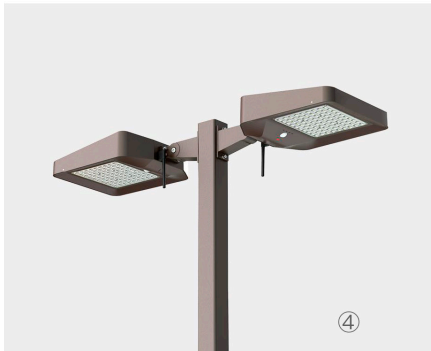
TCS technology - to protect against extreme temperatures.

Auto-monitoring system to save maintenance cost and time - Quickly identify any faulty components by patent FAS technology.

Mono-crystalline solar panel - PET delamination process to increase the weather resistance of solar panels. Increases life of panel to greater than 15 years.

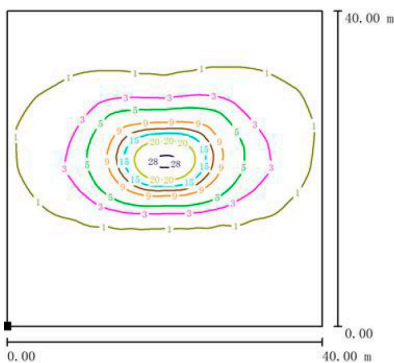
NCM Energy Type - Lithium-ion battery. Greater than 2000 cycles.

VARIOUS INSTALLATION METHODS

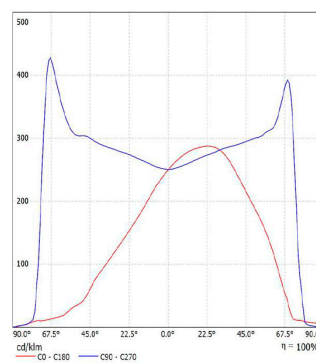


Professional TYPE III lighting distribution

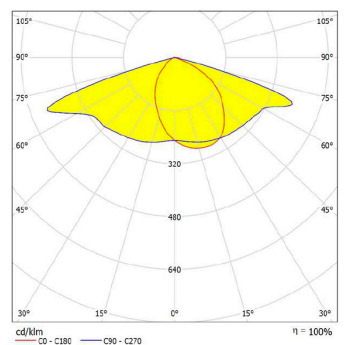
Road Simulated Diagram



Illumination Curve

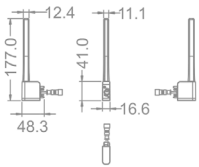


Luminance Distribution

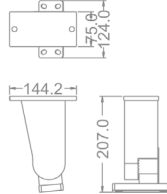


DIMENSIONS

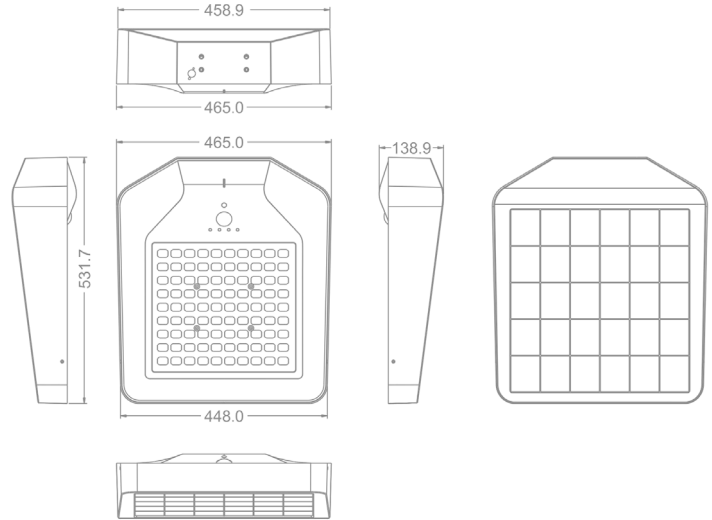
Bluetooth Antenna module



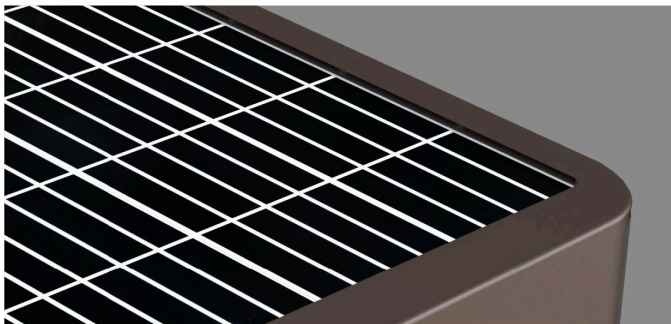
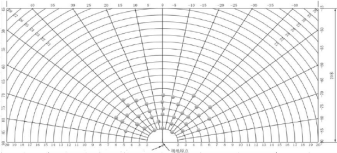
Adjustable Bracket



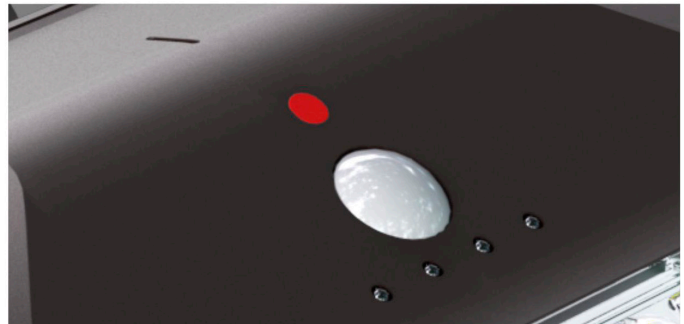
Lamp body



DETAIL BENEFITS



Monocrystalline : >21%



Switch / PIR motion sensor / Indicator light



High lumen LEDs 230lm/W



Bluetooth antenna and Adjustable bracket

Technical Data

Item	AAL-02	AAL-02H
Luminous flux	Up to 5000lm	Up to 5000lm
Solar panel		
Power Mono-crystalline	16.2V / 30W Mono-crystalline	16.2V / 30W
Li-ion battery		
Capacity	14.8V/20000MA(296WH)	14.8V/20000MA(296WH)
Charging/Discharging Temp	0~45°C / -20~60°C	-10°C-55°C/-20°C-55°C
Charging Time	11 hours	11 hours
LED (Osram)	3030 180pcs	3030 180pcs
Color Temperature (CCT)	2700K (90PCS) +5700K (90PCS)RA70	2700K (90PCS) +5700K (90PCS) RA70
Luminous efficiency	230lm/W	230lm/W
UV LED	-	-
Performance		
Autonomy	>10 Days	>10 Days
Control Mode	Button Switch, ON/OFF Long Press 1.5s, Bluetooth control	
Lighting Mode	M1: 30%+PIR all night M2: 70% all night M3: 100%(5h)+25%(PIR)(5h)+70% all night	
Mode Indication	-	
Capacity Indication	Every time you turn on the phone or switch between day and night, the mode indicator will be on for 5 seconds before switching the battery indicator; Battery Capacity < 20%, LED1 Flashing; 20% ≤ battery capacity < 40%, LED1 LED2 Flashing; 40% ≤ battery capacity < 60%, LED1-2 LED3 Flashing; 60% ≤ battery capacity < 80%, LED1-3 LED4 Flashing; battery capacity ≥ 80%, LED1-4.	
PIR	120°, > 5m	
Core technology	ALS 2.5 / TCS 3.0 / FAS	
Solar Panel Autoclean	-	
IP/IK Class / Anti-corrosion	IP66 / IK10 / C4H	
Install Height / Distance	6-8m / 30m	
Lighting Area (m ²)	15m * 25m	
N/W	10.5KG 11	