

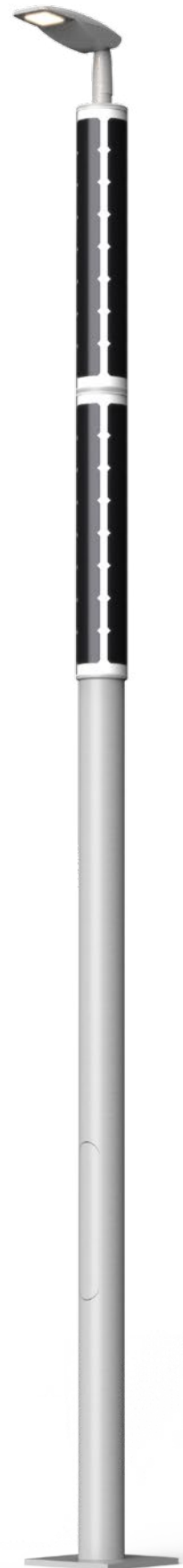


Soluxio P220 | A6

The smart solar light pole

Soluxio is the most advanced and sophisticated solar light pole available on the market. The solar light pole is completely off-grid and works autonomously, using sustainable solar power. This means there is no need for expensive cabling and invasive trenching, which results in fast installation, easy operation and a low total cost of ownership (TCO).

FlexSol believes in collaboration and teamwork. Making the world a greener and a more sustainable place is not done single-handedly. That's why FlexSol is partnered with world-leading companies, such as Valmont Structures, Nedal (Purso Group Oy), Schott AG and Innolumis. Together we have built Soluxio to withstand the toughest conditions. Soluxio has proven its outstanding quality at numerous locations worldwide, from the U.S.A. to the Middle East and from Mauritius to the Netherlands. Smart machine-learning algorithms continually optimize the performance of the carbon neutral light pole. The curved vertically integrated solar panels are wind-resistant and self-cleaning, as dirt and dust cannot stick on the design. Solar energy generated during the day is stored in high-quality lithium batteries, which are long-lasting and require minimum maintenance. The highly-efficient LED-luminaire provides powerful lighting at night. All Soluxio light posts can be connected to an online platform which enables remote monitoring and management. This reduces maintenance costs and makes the light pole extremely reliable.



- 💰 Cheaper than conventional street lighting**
The revolutionary Soluxio is not only greener but also cheaper than conventional grid-connected street lighting.
- ☀️ Light-years ahead in solar technology**
Years of development and innovation have led to the most advanced solar product in the market.
- 💡 Year-round lighting**
Powerful lighting, proven to be reliable during the whole year at any location.
- 📍 Fast and easy installation**
Fully installed in 45 minutes by plug-and-play design.
- 📶 Over-the-air updates & connectivity**
Convenient access to latest updates and innovations. Smart city applications can easily be connected.
- 🐢 Eco-friendly and carbon neutral**
100% solar powered, no cabling, no invasive trenching. Animal-friendly editions available.
- 🏠 Quick return on investment**
No cabling + no electricity bill + fast installation + low maintenance costs = quick return on investment.
- ⬇️ Low total cost of ownership**
High-quality components and remote monitoring result in low maintenance.

Product specifications

| | |
|-----------------------|--|
| Product name | Soluxio P220 A6 |
| Light pole height | 6 meter / 20 feet |
| Foundation type | Base plate (Underground part optional) |
| Operating temperature | -20 to 60 oC |

Column

| | |
|-------------------|--|
| Column type | A-Line |
| Column material | Blank Aluminum (Other colors available on request) |
| Finish | Natural (Powder coating or anodizing on request) |
| Maintenance hatch | 600 x 100 mm |

FlexSol Solar Module

| | |
|-------------------------------|---|
| Solar technology | Monocrystalline silicon solar cells |
| Amount of solar modules | 2 pcs |
| Cell efficiency | > 23% |
| Total power | > 220 Wp |
| Number of cells per module | 32 pcs |
| Number of strings per module | 4 strings |
| MPPT topology | Every string individually optimized for every individual module |
| Number of MPPT channels | 4 per solar module |
| Front sheet material | Borosilicate glass |
| Solar module backsheet colour | White (optional black backsheet) |
| Dimensions per module | Ø 200 x 1110 mm |
| Weight per module | ~ 7kg |

FlexSol Battery

| | |
|-------------------------------|--|
| Battery technology | Lithium (NMC) |
| Battery capacity | 800 Wh |
| Battery voltage | 14,88 Vdc (4S1P) |
| Battery SoC window | 15 ~ 95% |
| Turn around charge efficiency | 99.5% |
| Service life | ~10 years |
| Operating temperature | -20 to 60 oC |
| Enclosure | Integrated in FlexSol Control Unit enclosure |

FlexSol Control Electronics

| | |
|---|---|
| Battery Management System (BMS) | Integrated 4-cell monitoring and balancing |
| Control Electronics temperature and humidity monitoring | Integrated temperature sensor on-board lithium pack |
| | Integrated temperature sensor on-board electronics |
| | Integrated humidity sensor on-board electronics |
| LED driver type | Integrated high-efficiency DC LED driver |
| max. drive voltage | ~ 60 Vdc |
| max. drive current | ~ 1500 mA |
| nominal power | ~ 60 W |

| | |
|---|--|
| On-board mobile communication | GSM (EGPRS 850/900/1800/1900MHz) LTE-M (B1/B2/B3/B4/B5/B8/B12/B13/B18/B19/B20/B26/B28) LTE-NB1 (B1/B2/B3/B4/B5/B8/B12/B13/B18/B19/B20/B26/B28/B39) |
| Encryption | TLS 1.2 |
| SIM card slot | Standard SIM, 2FF, 25 x 15 x 0.76 mm |
| Included SIM card | Global M2M |
| Global Navigation Satellite System (GNSS) | GPS, BeiDou, Galileo, GLONASS, QZSS |
| MPPT communication | RS-485 |
| Over-the-Cable updateable | Yes (USB-programming device optional) |
| Over-the-Air updateable | Yes [1] |
| Remote monitoring and configuring | Yes [1] |
| Time and date | Astronomical clock |
| Lighting scheme | Automatic adaption to sunset and sunrise |
| Dimming scheme | Seasonal Dynamic Dimming |
| Smart city ready | Yes |
| Enclosure | Integrated in FlexSol Control Unit enclosure |
| Service plan [2] | 2 years included |

FlexSol Control Unit enclosure

| | |
|--------------------|--|
| Enclosure content | FlexSol Control Electronics FlexSol Battery |
| Location | In pole |
| Material | Aluminum |
| Finishing | Black anodised |
| Ingress protection | IP66 |
| Enclosure mounting | Lock secured (2 keys included) |
| Weight | ~ 6 kg |

Lighting

| | |
|----------------------|---|
| LED luminaire | Innolumis Mini Victoria |
| Lighting scheme | Automatic adaption to sunset and sunrise |
| Dimming scheme | Seasonal Dynamic Dimming |
| Luminaire max. power | from 6 W to max. 40 W |
| Color temperature | 3000K, 4000K, 5000K, Golden Orange, BAT light |

Cabling

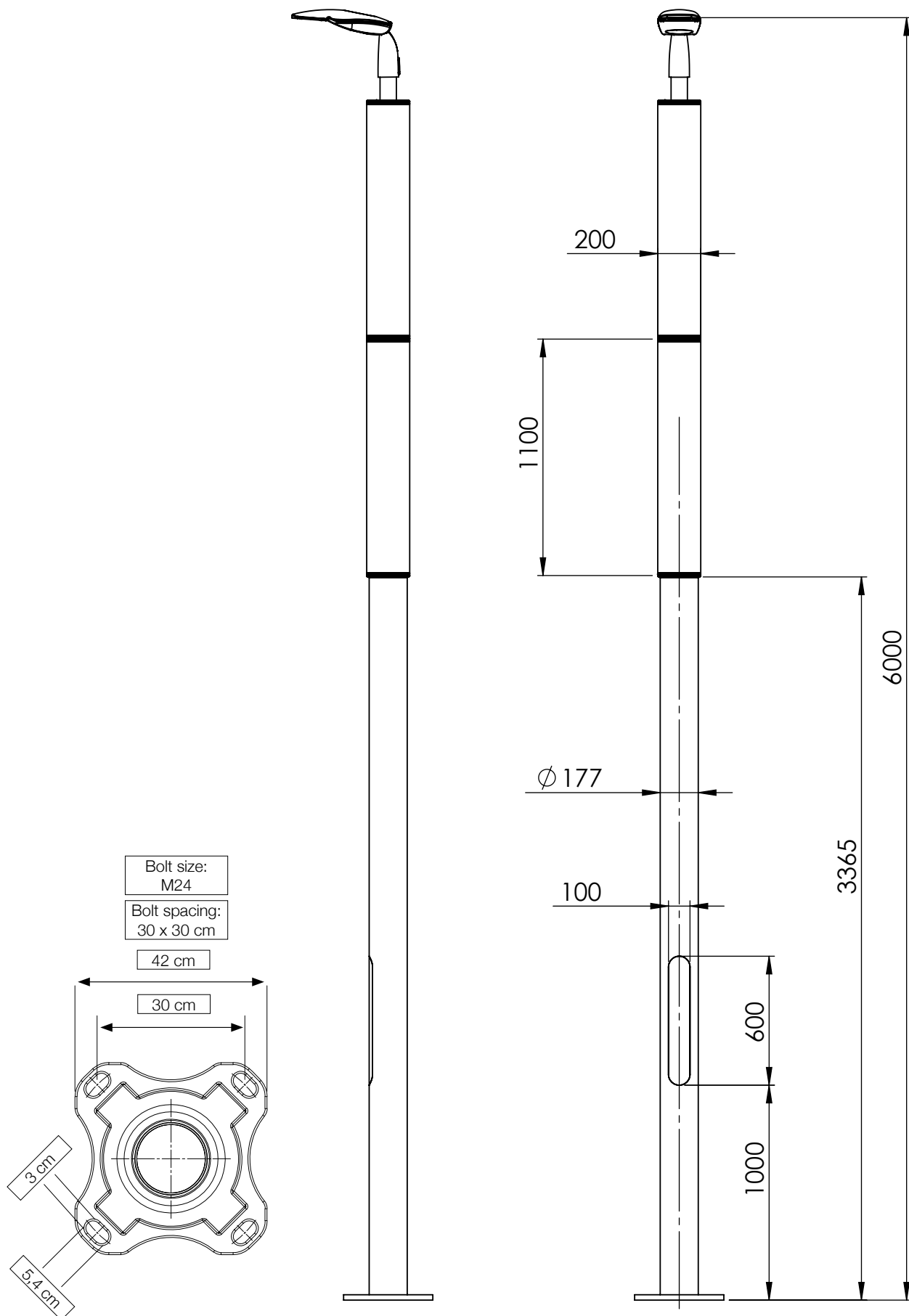
| | | |
|-------------|---|---------------------------|
| Cable types | Solar extension cable | 2 pcs (3 meter & 4 meter) |
| | Luminaire cable | 1 pcs |
| | Luminaire extension cable | 1 pcs (5 meter) |
| | 1x FlexSol Control Unit Breakout cable (35-pin) | |
| Material | Thermoplastic polyurethane (TPU) | |
| Cores | 4 Cores, 16 AWG | |
| Connectors | Stainless steel M12 connectors | |

| | |
|--------------------|---|
| Coding / Labelling | All cables coded and labelled |
| Packaging | |
| Packages | 2 pcs |
| Dimensions | Package 1: 585 x 50 x 50 cm |
| | Package 2: 120 x 80 x 100 cm |
| Weight | Package 1: ~ 60 kg (gross) |
| | Package 2: ~ 60 kg (gross) |
| Security | Package 1: N/A |
| | Package 2: Security seals; void if broken |

[1] Included in service plan

[2] The service plan includes: dataplan, updates, updates and over-the-air-features (e.g. remote monitoring and remote management)

Soluxio P220 | A6 Dimensions

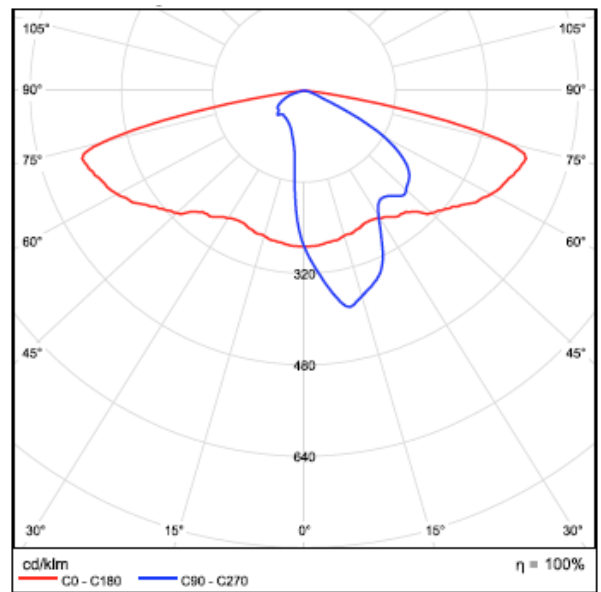


Innolumis Mini Victoria Luminaire

FlexSol is partnered with renowned luminaire manufacturer Innolumis in order to provide you the latest and most innovative LED luminaires available. For more information, please visit www.innolumis.com. Other luminaires are available upon request.

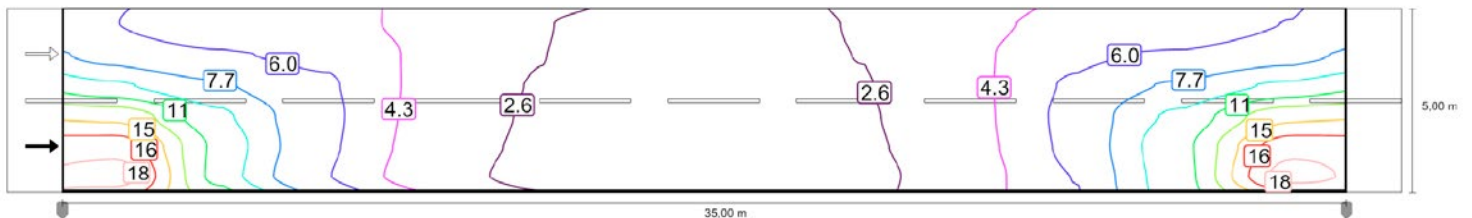


| Specifications | |
|----------------------------|---|
| LED quantity | 16 pcs |
| Rated power | from 6 W to max. 40 W |
| Lighting scheme | Automatic adaption to sunset and sunrise |
| Dimming scheme | Seasonal Dynamic Dimming |
| Material luminaire | Aluminum (powder coated) |
| Material light window | Thougened high transmission glass |
| Color temperature | 3000K, 4000K, 5000K, Golden Orange, BAT light |
| Light profiles | Medium, narrow, wide |
| Impact rating | IK07 (glass) / IK10 (luminaire) |
| Protection grade | IP66 |
| LED life time | 100.000 h |
| Installation pipe diameter | 48-60 / 60-76 mm |



Light distribution (at 20W)

Installation example



Horizontal illumination (lux)
 Light pole distance: 35 m
 Luminaire power: 20W

Innolumis

Soluxio P220 | A6

| Soluxio P220 A6 includes the following components: | Quantity |
|---|----------|
| FlexSol Solar Module, 110Wp, >23% | 2 |
| FlexSol 4-channel Maximum Power Point Trackers | 2 |
| Aluminum pole with base plate, 5.8 meter / 19 feet. | 1 |
| Innolumis Mini Victoria luminaire | 1 |
| FlexSol Control Unit, consisting of: <ul style="list-style-type: none"> FlexSol Control Electronics incl. communication and GNSS FlexSol Battery (800 Wh) FlexSol LED driver FlexSol Control Unit Breakout cable (35-pin) | 1 |
| GPS antenna | 1 |
| GSM antenna | 1 |
| Cable grommet | 2 |
| Soluxio Control Unit security lock, including 2 keys | 1 |
| Solar cable | 2 |
| Luminaire cable | 1 |
| FlexSol Solar Module adapter kit (bottom, center and top adapter ring) | 1 |

| Options (on request) |
|---|
| Other luminaire type |
| Underground part for in-ground mounting (as replacement for base plate) |
| Black solar modules (as replacement for white backsheets) (per 2 pcs) |

For customisation, a Minimum Order Quantity (MOQ) applies.